

ELISA-VIDITEST anti-Borrelia recombinant kits are intended for the detection of IgG and IgM antibodies to the pathogenic *Borrelia* strains (*B. afzelii*, *B. garinii* and *B. burgdorferi sensu stricto*) in human serum, plasma, cerebrospinal fluid and synovial fluid. The detection of antibodies is one of the laboratory tests that help to diagnose Lyme disease (LD). Anti-Borrelia IgM antibodies are detectable 3 weeks after infection with its maximum during the sixth week. Subsequently, the titre of IgM antibodies decreases and the IgG antibodies prevail. The detection of anti-Borrelia antibodies is very important at the early stage of the disease since the typical symptoms are present only in a certain proportion of patients (e.g. erythema migrans is present in 50% of patients). The clinical symptoms of LD are similar to the symptoms in other diseases, therefore the serology is also of use in differential diagnosis of neuroinfections, arthropathies, carditis and skin diseases.

ELISA-VIDITEST anti-C6 is an ELISA kit for the detection of anti-C6 antibodies in human serum. C6 is a highly specific conserved immunodominant 26 aminoacid peptide derived from VlsE – outer surface lipoprotein of *Borrelia burgdorferi*.

ELISA-VIDITEST



REF	Product	Method	Evaluation	Wells	Sample	Sensitivity/Specificity
ODZ-398	anti-Borrelia recomb. IgG + VlsE (CSF)	ELISA	semiquant. quant.	96	serum, plasma, cerebrospinal fluid, synovial fluid	95% / 99%
ODZ-399	anti-Borrelia recomb. IgM (CSF)	ELISA	semiquant. quant.	96	serum, plasma, cerebrospinal fluid, synovial fluid	99% / 97%
ODZ-398/5ST	anti-Borrelia recomb. IgG + VlsE (CSF)*/**	ELISA	semiquant. quant.	96	serum, plasma, cerebrospinal fluid, synovial fluid	95% / 99%
ODZ-399/5ST	anti-Borrelia recomb. IgM (CSF)*/**	ELISA	semiquant. quant.	96	serum, plasma, cerebrospinal fluid, synovial fluid	99% / 97%

*5-point calibration **kits are made-to-order

ELISA-VIDITEST

REF	Product	Method	Evaluation	Wells	Sample	Sensitivity/Specificity
ODZ-407	anti-C6	ELISA	semiquant.	96	serum	- / -

Why using **ELISA-VIDITEST anti-Borrelia recom.**:

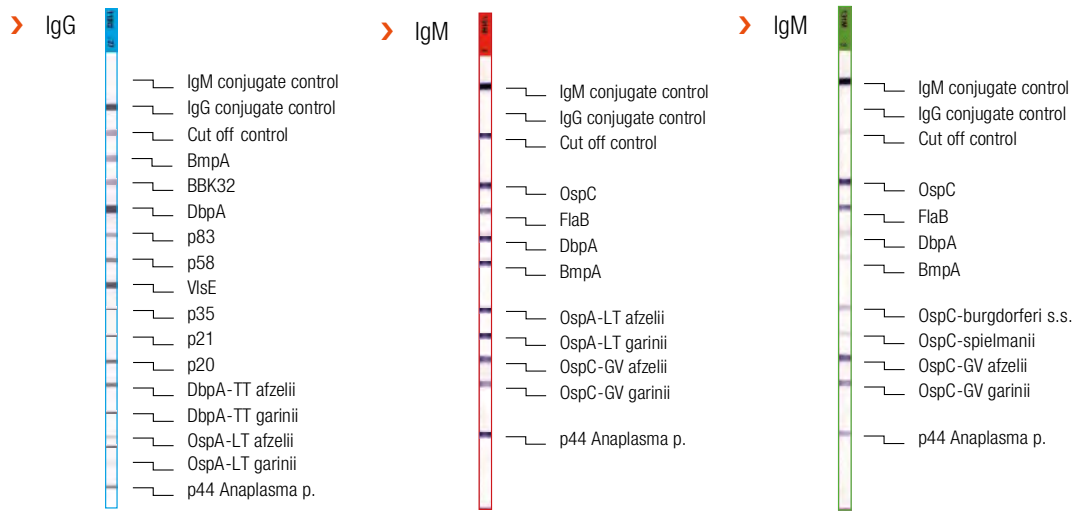
- Highly specific recombinant antigens
- High purity of antigens excludes cross-reactivity with antibodies to other spirochetes
- Quantitative and qualitative evaluation of the data
- Intrathecal IgG, IgM synthesis determination
- Antibody determination in serum, cerebrospinal fluid and synovial fluid
- ELISA kits compatible with **VIDIMAT** (except the kits with 5-point calibration)
- Incubations 30'/30'/15'
- Ready to use HRP conjugate and controls



Borrelia



LIA-VIDITEST anti-*Borrelia* kits are line immunoassays intended for qualitative detection of specific IgG and IgM antibodies to antigens of major pathogenic *Borrelia* strains (*B. afzelii*, *B. garinii*, *B. burgdorferi sensu stricto* and *B. spielmanii*) and *Anaplasma phagocytophilum* in human serum, plasma, cerebrospinal fluid and synovial fluid. The kits are used to confirm the ELISA results during the serological diagnostics of Lyme disease. The kits can be also used to an indicative diagnostics of Human granulocytic anaplasmosis (HGA). HGA is caused by bacterium *Anaplasma phagocytophilum*, which attacks white blood cells (granulocytes). Anaplasma infection can result in death for immunodeficient, post-splenectomy or post-transplant patients. Anaplasma-specific antibodies are detected in human serum by high-specific antigen p44.



LIA-VIDITEST



REF	Product	Method	Evaluation	No. of tests	Sample	Sensitivity/Specificity
ODZ-316	anti-Borrelia IgG	LIA	qualit.	16	serum, plasma, cerebrospinal fluid, synovial fluid	100% / 98%
ODZ-317	anti-Borrelia IgM	LIA	qualit.	16	serum, plasma, cerebrospinal fluid, synovial fluid	97% / 98%
ODZ-317SP	anti-Borrelia IgM sp.	LIA	qualit.	16	serum, plasma, cerebrospinal fluid, synovial fluid	97% / 98%

Why using LIA-VIDITEST anti-Borrelia:

- Detection of specific IgM and IgG antibodies to wide spectrum of major *Borrelia* strains antigens and p44 *Anaplasma* antigen
- Differentiation of specific antibodies of *B. afzelii*, *B. garinii*, *B. burgdorferi sensu stricto* and *B. spielmanii*
- Antigen specific lines evaluation using cut-off line
- Possibility of software data processing
- The software uses a common scanner
- Ready to use HRP conjugate and Universal buffer for sample dilution and washing
- Adhesive foils, evaluation protocol supplied with the kit
- Validated for Dynablot, RoboBlot, BeeBlot and B20 analyzers

