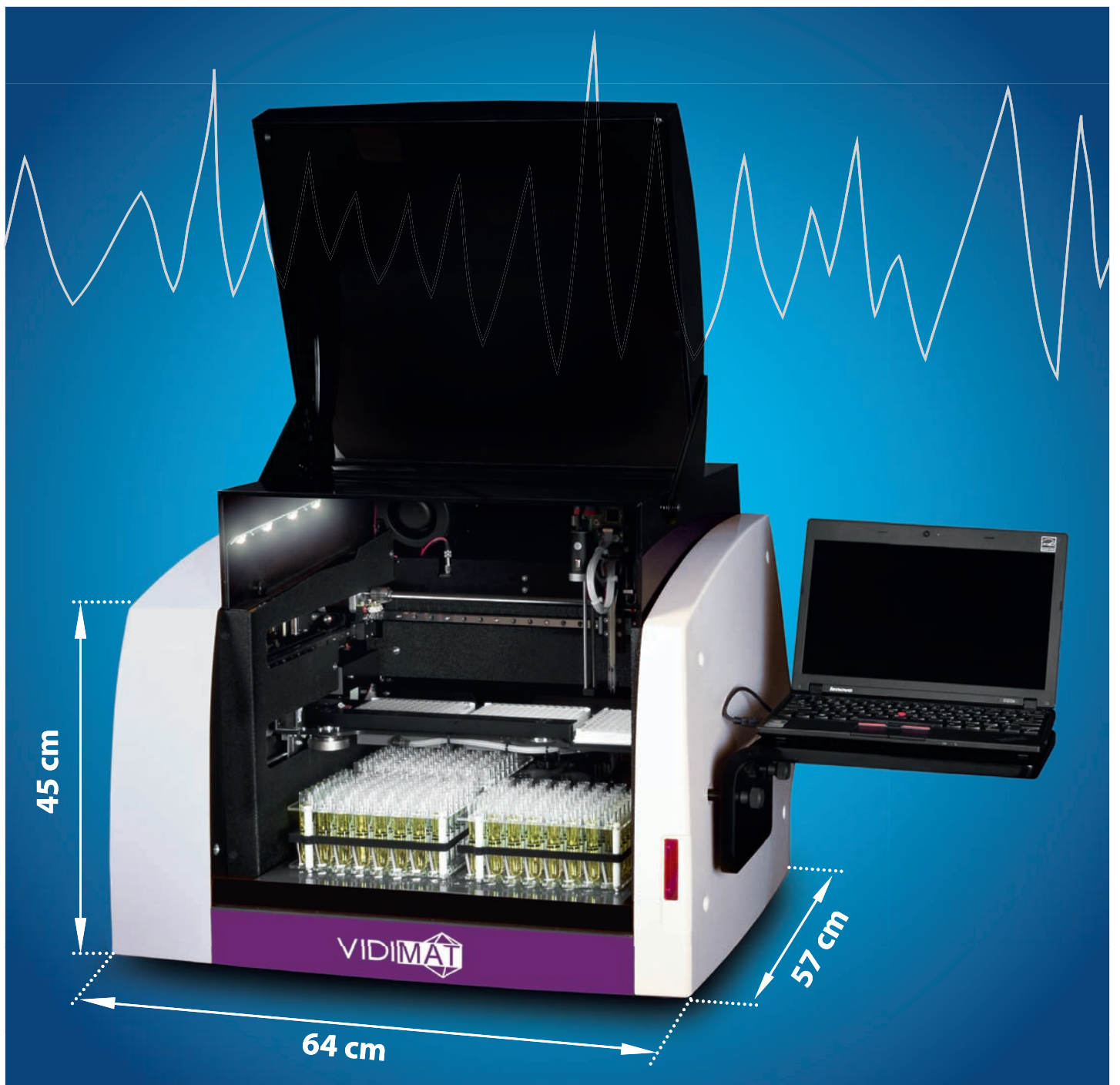
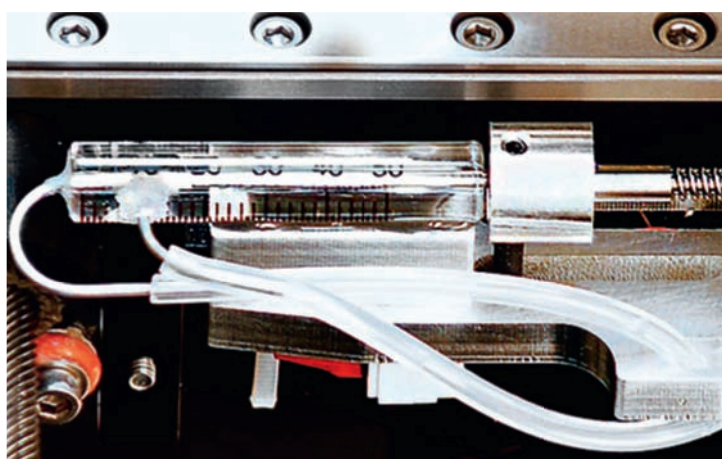


VIDIMAT

Automatic analyzer

- › Fully automatic
- › ELISA microtirate plates processing
- › VIDIA MONOTESTs processing
- › Reliability
- › Precision
- › Easy to use



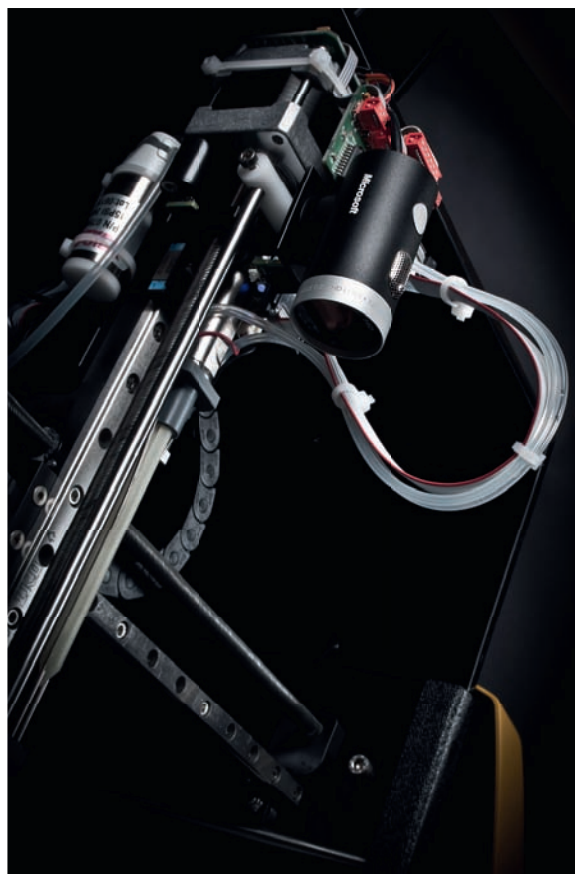


Precise pipetting

- › Analyzer uses high precision micro-syringe
- › Aspiration of 1 µl volumes with less than 3% CV
- › Sample dilutions directly in the reaction wells - eliminates the need for extra pre-dilution steps
- › The same level of precision as other instruments in its class, but at much lower volumes

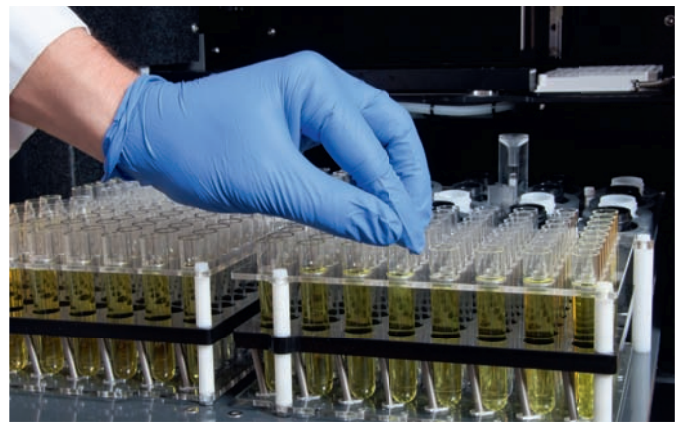
Real-time process monitoring

- › The probe-mounted camera allows to monitor internal operations in real-time
- › The camera and system logs allow VIDIA technicians to remotely resolve most problems



Intelligent racks

- › Intelligent racks sense each individual sample's position during loading, and record the position
- › The VIDIMAT's further streamlines setup with a slide-out tray that provides easy access to the intelligent racks for patient samples

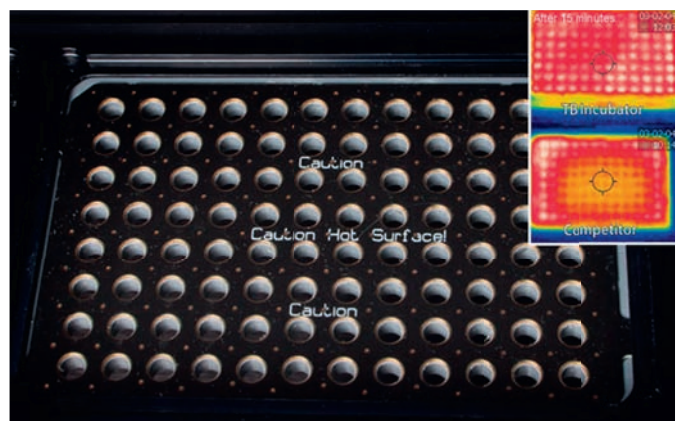


Samples shaking

- › Fully-integrated and automated orbital shaker
- › Orbital shaker keeps fluids in the wells while shaking up to 900 RPM
- › Repeatable and accurate results

Quick and uniform heating

- › Eliminates "edge effects"
- › The forced convection incubator quickly and uniformly heats each individual reaction well
- › Consistent results



Specifications:

Capacity

- › **Samples:** 192 sample positions
- › **Microtiter plates:** 2 positions + 1 pre-dilution plate
- › **Reagents:** 16 positions

Operation

- › **Loading and unloading of samples:** sliding sample tray, automatic sample localization
- › **Sample identification and loading:** built-in barcode reader
- › **Test tubes:** standard 12, 13 or 16 x 75 mm
- › **Wash station:** 2 wash bottles

Service

- › **Probe-mounted camera allows remote troubleshooting**

Dispensing

- › **High precision micro-syringe**
- › **Single probe, dual needle**
- › **Pipetting volume:** up to 500 µl, CV for 1 µl is less than 3%

Incubation

- › **Incubation temperature:** up to 40 °C
- › **Even heating** – eliminates "edge effects"
- › **Shaking:** amplitude 1 mm, speed up to 900 RPM, no splash from the wells

Technical specifications

- › **Dimensions:** 64 cm x 57 cm x 45 cm
- › **Photometer wavelengths:** 405, 450, 490, 550 and 630 nm
- › **User interface:** MS Windows Graphical User Interface (Windows 7, Windows 8)
- › **LIS integration:** Bi-directional, RS232, USB, TCP/IP
- › **CE certified**



EUROPEAN UNION
European Regional Development Fund
Operational Programme Enterprise
and Innovations for Competitiveness