



Chlamydia



Distribuito in ITALIA da
Li StarFish S.r.l.
 Via Cavour, 35
 20063 Cernusco S/N (MI)
 telefono 02-92150794
 info@listarfish.it
 www.listarfish.it



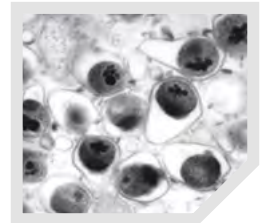
CHLAMYDIA TRACHOMATIS AVAILABLE DURING 2021

Chlamydia trachomatis and Chlamydia pneumoniae

ELISA-VIDITEST anti-*Chlamydia trachomatis* kits are intended for the diagnosis of acute and chronic infections caused by *Chlamydia trachomatis*, i.e. inflammatory diseases of genitourinary tract in women and men, including their complications (arthritis, conjunctivitis). Anti-*C.trachomatis* antibody testing contributes to differential diagnosis of sexually transmitted diseases and eye infections in infants.

ELISA-VIDITEST anti-*Chlamydia pneumoniae* kits are intended for diagnosis of infections in lower respiratory tract and eye.

Primary chlamydial infection is characterized by the predominant IgM response within 2 to 4 weeks and the delayed IgG and IgA response within 6 to 8 weeks. After the acute *C. pneumoniae* / *C. trachomatis* infection IgM antibodies usually decrease and become undetectable in 2 to 6 months. IgG antibody titres decrease slowly and may persist for years. IgA antibodies tend to disappear in several weeks, but in some cases they can persist for months or years. When primary chlamydia infection is suspected, the detection of IgM is highly diagnostic. However, in recurrent or chronic infections the prevalence of IgM is low and therefore the absence of IgM does not necessarily exclude an on-going infection. For diagnosis of reinfection IgG and IgA levels rise in paired serum samples is indicative. The long time persistence of the elevated IgA antibody titres may indicate chronic infection.



ELISA-VIDITEST



REF	Product	Method	Evaluation	Wells	Sample	Sensitivity/Specificity
	anti- <i>Chlamydia trachomatis</i> IgG	ELISA	quant.	96	serum, plasma	
	anti- <i>Chlamydia trachomatis</i> IgA	ELISA	qualit.	96	serum, plasma	
NEW ODZ-457	anti- <i>Chlamydia pneumoniae</i> IgG	ELISA	semiquant.	96	serum, plasma	96.4% / 90.4%
NEW ODZ-458	anti- <i>Chlamydia pneumoniae</i> IgM	ELISA	semiquant.	96	serum, plasma	91.7% / 98.3%
NEW ODZ-459	anti- <i>Chlamydia pneumoniae</i> IgA	ELISA	semiquant.	96	serum, plasma	94.6% / 95.1%

Why using ELISA-VIDITEST

anti-*Chlamydia trachomatis* and anti-*Chlamydia pneumoniae*:

- Determination of type- specific antibodies (differentiation between *C.trachomatis* and *C. pneumoniae*)
- Simultaneous detection of several markers of chlamydial infection in one dilution of the sample
- Semiquantitative evaluation of IgG, IgM and IgA antibodies
- Ready to use HRP conjugate and controls
- Dilution buffer is the same for IgG, IgA and IgM determination
- RF sorbent included for rheumatoid factor elimination (kits for IgM determination)
- Compatible with **VIDIMAT**

