



Distribuito in ITALIA da  
**Li StarFish S.r.l.**  
Via Cavour, 35  
20063 Cernusco S/N (MI)  
telefono 02-92150794  
fax 02-92157285  
info@listarfish.it  
www.listarfish.it



**Anti-APP [pT668]  
Rabbit Polyclonal antibody  
Ref. 4BDX-1503**

**Biomolecole**

Anti-APP [pT668]  
rabbit polyclonal antibody

**Size**

80 µl

**Formulation**

Rabbit serum diluted in  
glycerol with 0.09% sodium  
azide

**Storage**

+4°C / -20°C

**Immunogen**

Peptide

**Specificity**

Anti-APP phosphorylated  
at threonine 668

**Cross-reactivity**

Human, Mouse, Rat

**Applications**

WB, IHC, IF

• **Preparation**

This polyserum was obtained by immunizing a rabbit with a 12 amino acid peptide containing the phosphorylated threonine 668 (YVDAAVTPEERH). The phosphorylated threonine is underlined.

• **Specificity**

Determined by its ability to recognize human APP phosphorylated at threonine 668.

• **Storage**

Store at +4°C for short term use (1-2 weeks) - Store at -20°C for long term use.

• **Applications**

Recommended concentration of use are:

*Western-blot: 1:4000 in Tris HCl pH 8.0 Tween-20 0.05% and 5% dry skimmed milk.*

*IHC /IF: 1:200 in PBS with 5% BSA.*

- **General information**

Amyloid protein precursor also called APP (Gene ID: 351) is a type 1 transmembrane protein whose metabolism leads to the production of amyloid-beta peptides. In Alzheimer's disease, amyloid peptides are the main components of amyloid deposits. Phosphorylation of APP at threonine 668 is increased in Alzheimer's disease and promotes amyloid-beta peptide production. The threonine 668 is phosphorylated by CDK5 (cyclin dependent kinase 2), JNKs (c-Jun N-terminal kinases) and GSK3 (glycogen synthase kinase 3) and DYRK1A (Dual-specificity tyrosine(Y)-phosphorylation regulated kinase 1A).

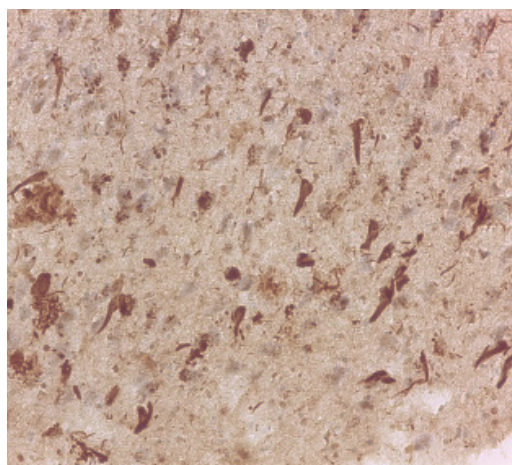
- **References**

*Vingtdeux V, Hamdane M, Gompel M, Bégard S, Drobecq H, Ghestem A, Grosjean ME, Kostanjevecki V, Grognet P, Vanmechelen E, Buée L, Delacourte A, Sergeant N (2005). Phosphorylation of amyloid precursor carboxy-terminal fragments enhances their processing by a gamma-secretase-dependent mechanism. Neurobiol Dis. 20(2): 625-637.*

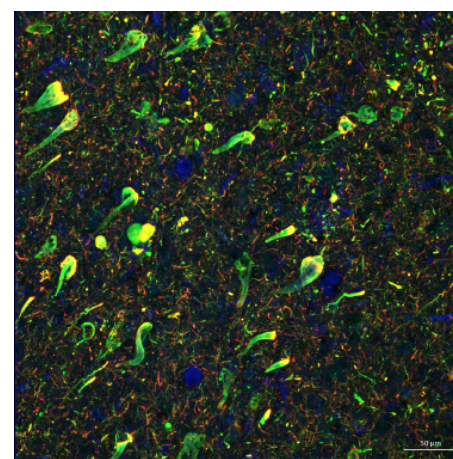
- **Application exemples**



Western-blotting of mouse brain extracts



Immunohistochemistry of human Alzheimer disease brain



Immunofluorescence of human Alzheimer disease brain

**TO PLACE AN ORDER**



Distribuito in ITALIA da  
**Li StarFish S.r.l.**  
 Via Cavour, 35  
 20063 Cernusco S/N (MI)  
 telefono 02-92150794  
 fax 02-92157285  
 info@listarfish.it  
 www.listarfish.it