

RAINBOW®

RAINBOW LAMB & KID - BIO K 316 (5 DEVICES - 5 PATHOGENS)

**STRIPS FOR DETECTION
OF ROTAVIRUS GROUP A,
E. COLI ATTACHEMENT
FACTOR F5 (K99),
CRYPTOSPORIDIUM,
CLOSSTRIDIUM
PERFRINGENS AND ITS
EPSILON TOXIN IN LAMB &
KID FAECES**



HOW TO PROCEED



■ Take the faeces directly from the rectum of the lamb or the kid. If the samples are liquid, take a spoonful.



■ If faeces are solid, remove the excess amount using a spatula.



■ Dilute its content in the liquid of the small tube called sample tube.



■ Shake the sample tube to homogenize well.



■ Tap the sample tube on a hard surface so that all the liquid is collected at the bottom of the tube.



6

■ Tear the aluminium envelope open at the notch. Once the device has been taken out of the envelope its stability is of short duration, especially in a humid environment.



8

■ Screw the top of the strip tube.

You must hear two separate clicks, for perforation of superior and inferior septa of the sample tube.

Leave the device **vertically on a flat surface** and wait for 10 minutes.

The liquid contained in the sample tube moves to the strip tube and slowly migrates along the strips.



10

■ After 10 minutes, read the results using picture 11 as standard.

Precautions for use

- Store kits in a dry place at room temperature.
- Wear gloves while carrying out the test.
- The analysed sample shouldn't be too concentrated. Do not prepare a sample volume greater than a spoonful.
- Dispose of the device in keeping with legislation on environment protection and management of biological waste.



7

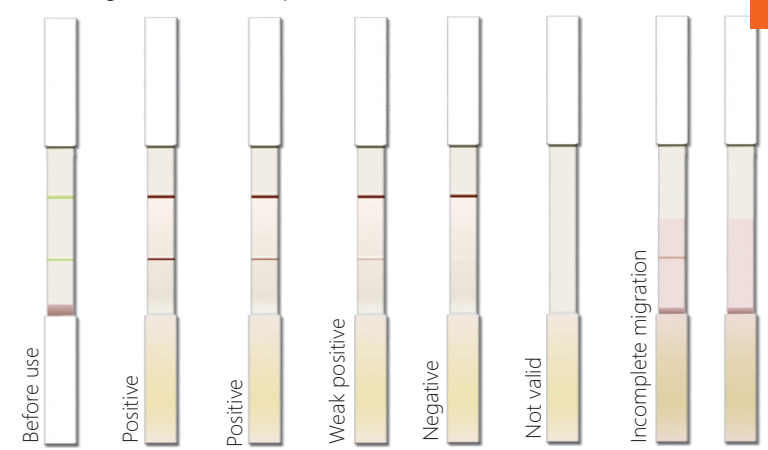
■ Insert the sample tube into the strip tube.



9

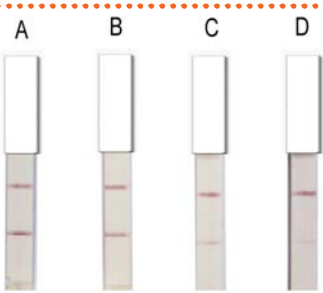
■ Sometimes, especially when the sample isn't homogenized, liquid migration can stop on one or more strips. In that case, tap the end of the strip tube on hard surface to allow migration to start again.

1 line = negative 2 lines = positive



11

Rota Red Strip **Epsilon** Orange Strip
E. coli F5 Blue Strip **Crypto** Green Strip



12

C.perf. White Strip

- A) 10^9 CFU/g of faeces
- B) 10^8 CFU/g of faeces
- C) 10^7 CFU/g of faeces
- D) $< 10^6$ CFU/g of faeces



Bio-X Diagnostics is ISO 9001:2008 certified to assure the best to its customers



Distribuito in ITALIA da
Li StarFish S.r.l.
 Via Cavour, 35
 20063 Cernusco S/N (MI)
 telefono 02-92150794
 info@listarfish.it
 www.listarfish.it